

SECTION 8, T.6N., R.2W., S.L.B. & M.

NE 1/4

27-1

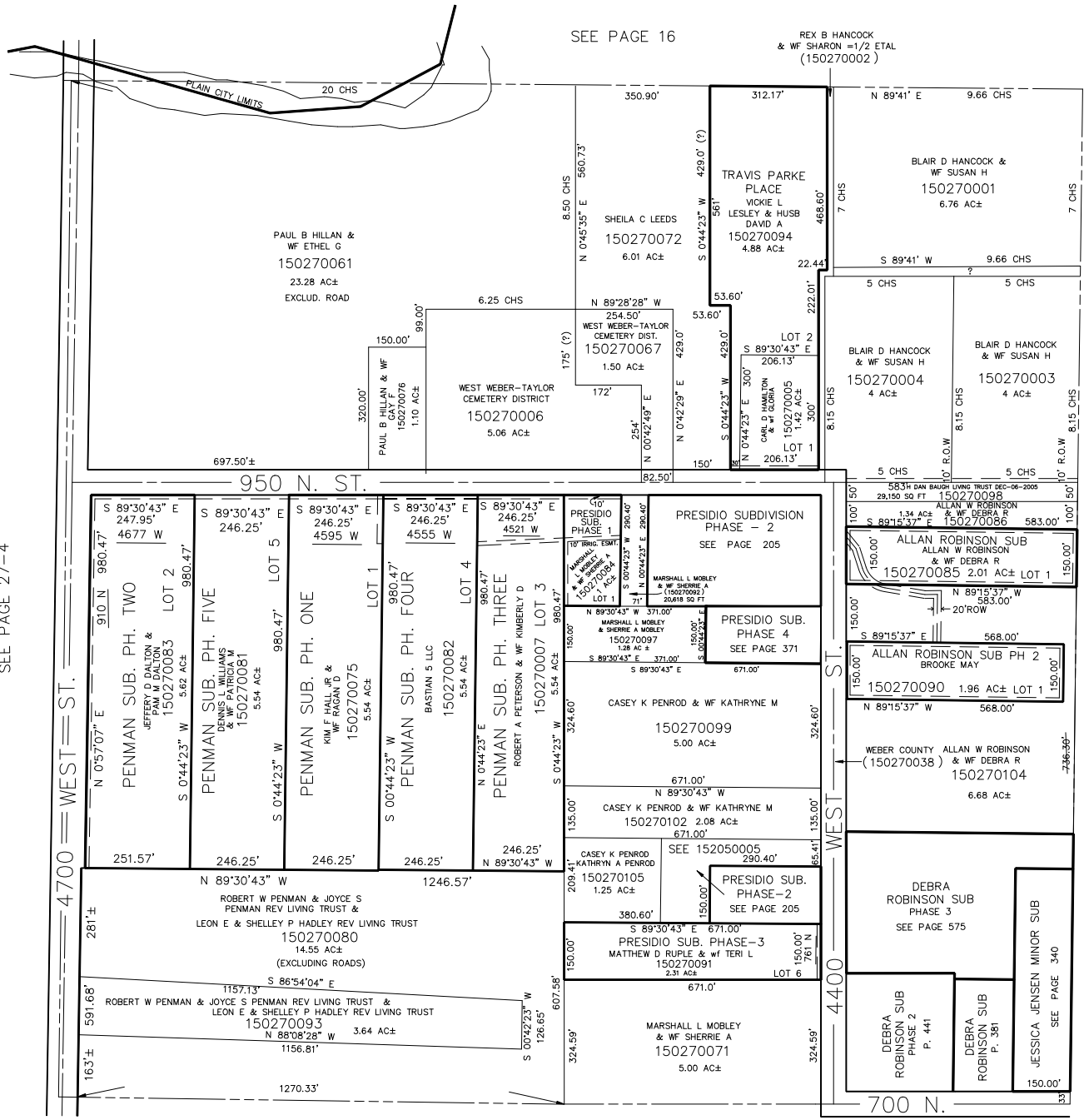
IN WEBER COUNTY

SCALE 1" = 200'

TAXING UNIT: 53

SEE PAGE 16

REX B HANCOCK & WF SHARON =1/2 ETAL (150270002)



PLAIN CITY LIMITS

PAUL B HILLAN & WF ETHEL C
150270061
23.28 AC±
EXCLUD. ROAD

WEST WEBER-TAYLOR
CEMETERY DISTRICT
150270006
5.06 AC±

TRAVIS PARKE
PLACE
VICKIE L
LESLEY & HUSB
DAVID A
150270094
4.88 AC±

BLAIR D HANCOCK &
WF SUSAN H
150270001
6.76 AC±

BLAIR D HANCOCK
& WF SUSAN H
150270004
4 AC±

BLAIR D HANCOCK
& WF SUSAN H
150270003
4 AC±

PENMAN SUB. PH. TWO
JEFFERY D DALTON &
PAM M DALTON
150270083
LOT 2
5.62 AC±

PENMAN SUB. PH. FIVE
DENNIS J WILLIAMS
& WF SHERRIE A
150270081
5.54 AC±

PENMAN SUB. PH. ONE
KIM F HAGAN &
WF SHERRIE A
150270075
5.54 AC±

PENMAN SUB. PH. FOUR
BASTIAN S LLC
150270082
5.54 AC±

PENMAN SUB. PH. THREE
ROBERT A PETERSON & WF KIMBERLY D
150270007
LOT 3
5.54 AC±

PRESIDIO SUB. PHASE 1
MARSHALL L MOBLEY & WF SHERRIE A
150270004
LOT 1
1.38 AC±

PRESIDIO SUB. PHASE 2
MARSHALL L MOBLEY & WF SHERRIE A
150270005
LOT 1
1.42 AC±

PRESIDIO SUB. PHASE 4
MARSHALL L MOBLEY & WF SHERRIE A
150270097
LOT 1
1.38 AC±

PRESIDIO SUB. PHASE 3
MATTHEW D RUPLE & WF TERI L
150270091
LOT 6
2.31 AC±

ALLAN ROBINSON SUB
ALLAN W ROBINSON
& WF DEBRA R
150270085
LOT 1
2.01 AC±

ALLAN ROBINSON SUB PH 2
BROOKE MAY
150270090
LOT 1
1.96 AC±

ALLAN W ROBINSON
& WF DEBRA R
(150270038) & WF DEBRA R
150270104
6.68 AC±

ROBERT W PENMAN & JOYCE S
PENMAN REV LIVING TRUST &
LEON E & SHELLEY P HADLEY REV LIVING TRUST
150270080
14.55 AC±
(EXCLUDING ROADS)

CASEY K PENROD & WF KATHRYN M
150270099
5.00 AC±

DEBRA ROBINSON SUB
PHASE 3
SEE PAGE 575

DEBRA ROBINSON SUB
PHASE 2
P. 441

DEBRA ROBINSON SUB
P. 381

JESSICA JENSEN MINOR SUB
SEE PAGE 340

SEE PAGE 27-4

4700 WEST ST.

950 N. ST.

4400 WEST ST.

700 N.

SEE PAGE 28